

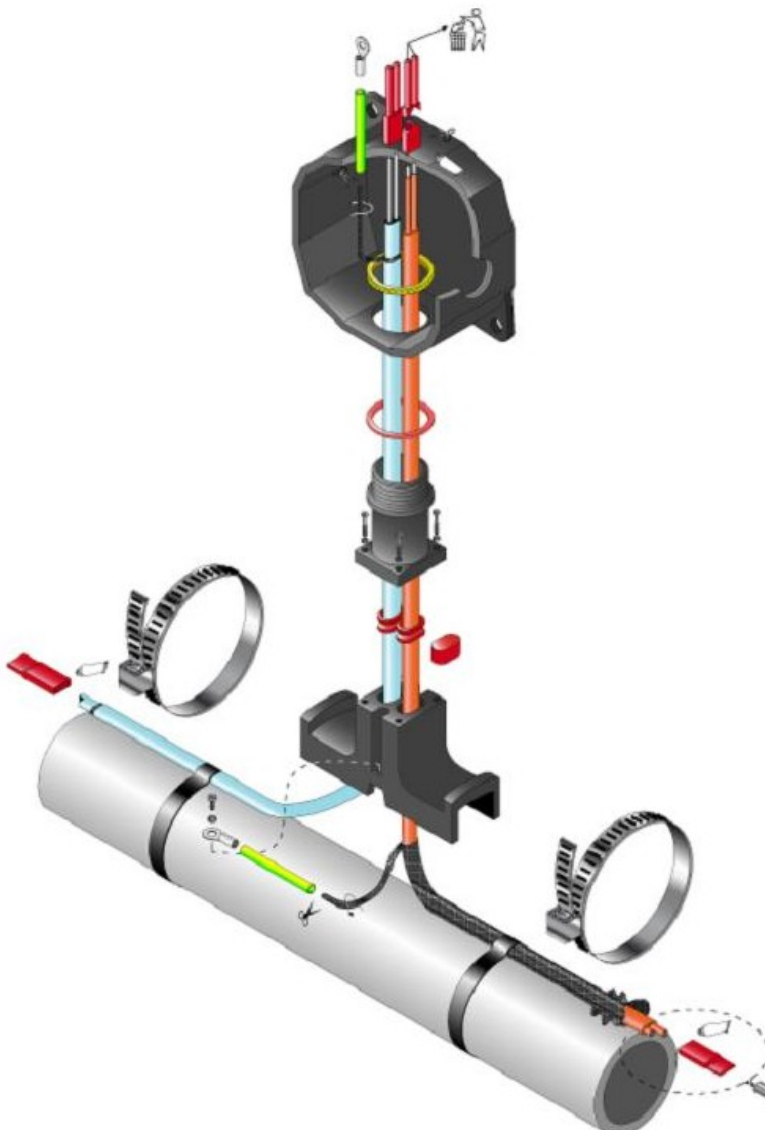
DIRECT ENTRY SEALED TERMINATION UNIT

HEAT TRACE HEATING CABLE

Flexotherm™ offers DETSU terminations for all heat trace heating cables. It has been specifically designed to reduce the risk of damage to heating cables at termination points, thus avoiding the need to expose the heating cable as it emerges from the thermal insulation for connection into the junction box.

FEATURES

- Available to use in safe and hazardous areas
- Eliminates the risk of damage to heating cables at termination points
- May be used for power connection, in-line and tee-splicing
- RTD version suitable as a means of temperature sensing at various points along the length of the heated pipe work.
- Approved to EN EuroNroms.

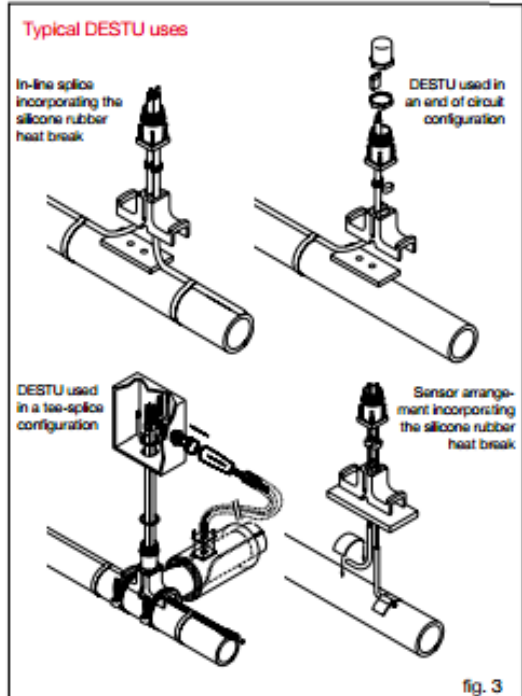
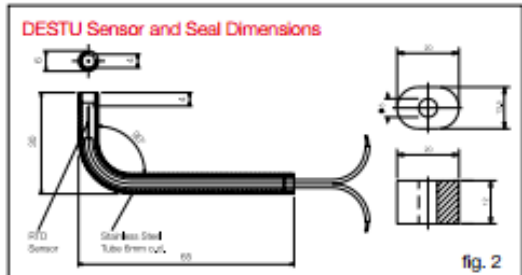
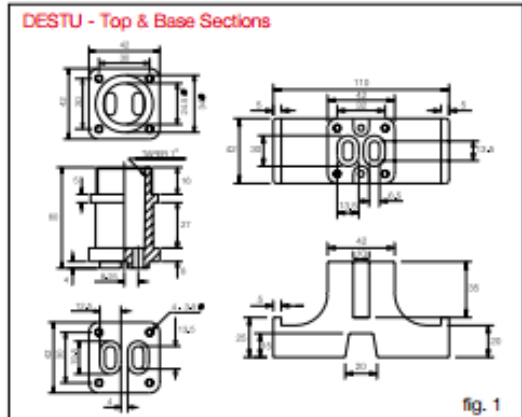


DIRECT ENTRY SEALED TERMINATION UNIT

HEAT TRACE HEATING CABLE

Specification

Maximum Exposure Temperature	180°C (356°F)
Minimum Operating Temperature	-65°C (-85°F)
Minimum Installation Temperature	-40°C (-40°F)
DESTU Dimensions (LxWxH)	110 x 114 x 42mm
IP Rating	IP54
Heat Break Temperature	Minimum -45°C (-4.9°F) Maximum 250°C (482°F)
Sensor Construction	Stainless steel tube with PTFE insulated wires and Pt100 RTD sensor.
Power Cable	3c x 2.5mm ² (supplied by others)
Current Rating	16A continuous
Voltage Rating	208 - 275V





SF-P / SF-T and SF-E Components



SF-P Unit.....Power Connection



SF-T Unit....."T" Splice



SF-E Unit.....End Seal

STRIPFREE HEAT TRACE HEATING CABLE

Flexotherm™ offers StripFree terminations for all heat trace heating cables. No special tools are needed to perform a neat, convenient and simple termination.

FEATURES

- Power Connection, or In-Line & Tee splice; plus End Seal
- Unique cutting system ensures optimum electrical contact every time.
- No need to strip down to conductors
- Lower system costs
- 16A rating
- No additional seals, one size fits all cables
- Unique Ex approved device
- Easy installation
- Safe and reliable
- Water and dust resistant to IP66 and the cable seals provide strain relief
- High impact resistance and excellent insulating properties result in a high integrity connector system
- No need for adhesives, gels or heat shrink.

STRIPFREE HEAT TRACE HEATING CABLE

Specification

Components	StripFree connector StripFree end seal Suitable bushes to allow for either: Power Connection (to 1 or 2 heaters) In-Line Splice Connection Tee Splice Connection or End Seal Mounts directly onto pipe
------------	--

IP Ratings	Connector IP66, End Seal IP67
Ambient Temperature	-40°C to +50°C (-40°F to +212°F)

Suitable for use with:

FreezStop Lite Extra	FreezStop Ultimo
FreezStop Regular	FreezStop Ultimo (w)
FreezStop Extra	HotWat Regular
FreezStop Extra (w)	HotWat Plus
FreezStop Micro	G-Trace
FreezStop Super	SnoMelt (SMB)
FailSafe Super	

Materials of Construction	Body - Polyamide Conductors - nick coated brass
---------------------------	--

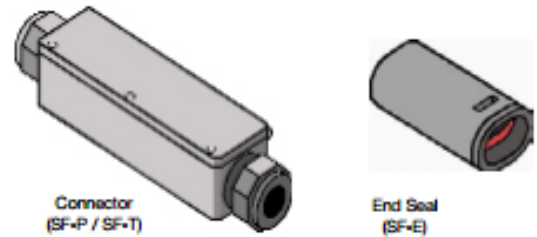
Weights

SF - P	StripFree - Power 575g
SF - T	StripFree - T/Splice 535g
SF - E	StripFree - End Seal 24g

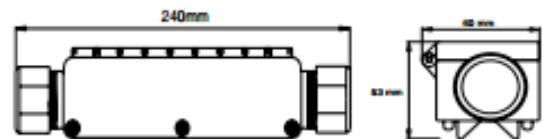
Power Cable Entry	Gland provided as standard, the installer should insert the appropriate supplied bush into the gland
-------------------	--

Power Cable	3c x 2.5mm ² (supplied by others)
Current Rating	16A continuous
Voltage Rating	208 - 275V

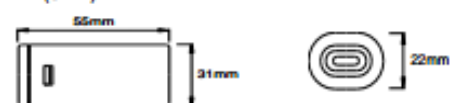
StripFree Components



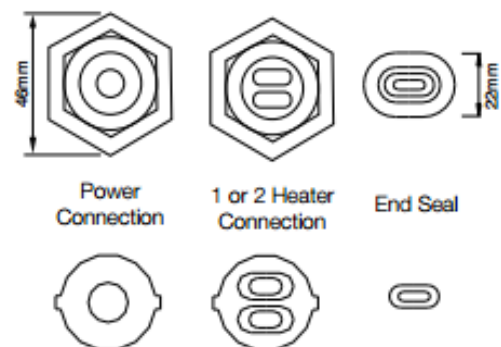
Connector (SF-P and SF-T)



End Seal (SF-E)



Gland and Seal Set



STANDARD TERMINATION HEAT TRACE HEATING CABLE

CABLE GLAND SPECIFICATIONS

Ambient Temperature -40°C to +50°C
(-40°F to +212°F)

Minimum Operating Temperature -65°C (-85°F)

Earth Continuity Plate Available as extra

Entries

Standard entries are 20mm and 25mm ISO metric.
Alternatives upon request are: 3/4" and 1" B.S. Conduit,
Pg11, 13.5, 16 and 21, 1/2" and 3/4" N.P.T.

Terminal Blocks

Entrelec Terminals

TYPE	MIN	MAX	VOLTS	AMPS	QTY
MA2.5/5	0	2.5	380	15	10
M4/6	0	4.0	660	30	8

Wire Capacity mm²

Maximum Ratings

Terminal Blocks (cont.)

Weidmuller - Klippon Terminals

TYPE	MIN	MAX	VOLTS	AMPS	QTY
SAK2.5	0.5	2.5	550	15	10
SAK4	0.5	4.0	550	15	8
SAK6N	0.5	6.0	550	18	6
SAK10	2.5	10	550	37	4
WDU2.5	0.22	2.5	726	15	8
BK3-BK8	0.5	4.0	275	21	1
MK6/3-4-6	0.5	6.0	418	18	1

Wire Capacity mm²

Maximum Ratings



JUNCTION BOX SPECIFICATIONS

Ambient Temperature -60°C to +80°C
(-85°F to +176°F)

Minimum Operating Temperature -65°C (-85°F)



TYPE	DIM.	ATEX CERT.	IECEX CERT.	EAC CERT.
PGS1	M20(S) x 1.5	IMQ 13 ATEX024X	IECEX IMQ 13.00007X	TC RU C- GB.ГБ05.B. 00185
PGS3	M20(S) x 1.5	IMQ 13 ATEX024X	IECEX IMQ 13.00007X	TC RU C- GB.ГБ05.B. 00185
PGS5	M20(S) x 1.5	IMQ 13 ATEX024X	IECEX IMQ 13.00007X	TC RU C- GB.ГБ05.B. 00185